



DEA No. RA0571996  
FL License # CMTL-0003  
CLIA No. 10D1094068

# Certificate of Analysis

## Compliance Test

**WHITE LABEL LEAF**  
6205 Johns Road  
STE 9  
Tampa, FL 33634

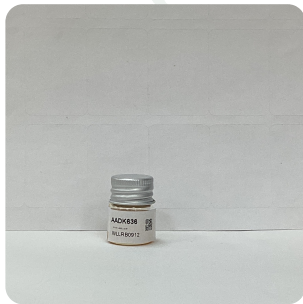
Batch # WLLRB0912  
Batch Date: 2022-09-14  
Extracted From: HEMP

Test Reg State: Florida

Order # WHI220914-020001  
Order Date: 2022-09-14  
Sample # AADK636

Sampling Date: 2022-09-15  
Lab Batch Date: 2022-09-15  
Completion Date: 2022-09-17

Initial Gross Weight: 10.546 g



Potency  
Tested

Product Image

**Potency 21 (LCUV)** Tested SOP13.002 (LCUV)

Specimen Weight: 59.600 mg

Analyte	Dilution (1:n)	LOD (%)	LOQ (%)	Result (mg/g)	(%)
Delta-8 THC	1000.000	2.60E-5	0.0015	602.7000	60.2700
CBN	10.000	1.40E-5	0.0015	3.2980	0.3298
CBNA	10.000	9.50E-5	0.0015	2.2900	0.2290
Delta-8 THCV	10.000	4.00E-5	0.0015	2.1460	0.2146
CBD	10.000	5.40E-5	0.0015	1.2910	0.1291
CBT	10.000	2.00E-4	0.0015	1.1070	0.1107
THCVA	10.000	4.70E-5	0.0015	0.3610	0.0361
CBC	10.000	1.80E-5	0.0015	<LOQ	<LOQ
CBCA	10.000	1.07E-4	0.0015	<LOQ	<LOQ
CBDA	10.000	1.00E-5	0.0015	<LOQ	<LOQ
CBDV	10.000	6.50E-5	0.0015	<LOQ	<LOQ
CBDVA	10.000	1.40E-5	0.0015	<LOQ	<LOQ
CBG	10.000	2.48E-4	0.0015	<LOQ	<LOQ
CBGA	10.000	8.00E-5	0.0015	<LOQ	<LOQ
CBL	10.000	3.50E-5	0.0015	<LOQ	<LOQ
Delta-8 THC-O Acetate	10.000	2.70E-5	0.0003	<LOQ	<LOQ
Delta-9 THC	10.000	1.30E-5	0.0015	<LOQ	<LOQ
Delta-9 THC-O Acetate	10.000	7.70E-5	0.0003	<LOQ	<LOQ
Exo-THC	10.000	2.30E-4	0.0015	<LOQ	<LOQ
THCA	10.000	3.20E-5	0.0015	<LOQ	<LOQ
THCV	10.000	7.00E-6	0.0015	<LOQ	<LOQ

**Potency Summary**

Total Active THC None Detected	Total Active CBD 0.129%
Total CBG None Detected	Total CBN 0.531%
Other Cannabinoids 60.627%	Total Cannabinoids 61.286%

Xueli Gao Lab Toxicologist  
Ph.D., DABT

Aixia Sun Lab Director/Principal Scientist  
D.H.Sc., M.Sc., B.Sc., MT (AAB)



Definitions and Abbreviations used in this report: Total Active CBD = CBD + (CBD-A \* 0.877), \*Total CBDV = CBDV + (CBDVA \* 0.87), Total Active THC = THCA-A \* 0.877 + Delta 9 THC, Total THCV = THCV + (THCVA \* 0.87), CBG Total = (CBGA \* 0.877) + CBG, CBN Total = (CBNA \* 0.877) + CBN, Total CBC = CBC + (CBCA \* 0.877), Total THC-O-Acetate = Delta 8 THC-O-Acetate + Delta 9 THC-O-Acetate, Other Cannabinoids Total = Total Cannabinoids - All the listed cannabinoids on the summary section, Total Detected Cannabinoids = Delta8a10a-THC + Delta8-THC + Total CBN + CBT + Delta8-THCV + Total CBG + Total CBD + Total THCV + CBL + Total THC + Total CBC + Total CBDV + Delta10-THC + Total THC-O-Acetate, Analyte Details above show the Dry Weight Concentrations unless specified as 12% moisture concentration. (mg/ml) = Milligrams per Milliliter, LOQ = Limit of Quantitation, LOD = Limit of Detection, Dilution = Dilution Factor (ppb) = Parts per Billion, (%) = Percent, (cfu/g) = Colony Forming Unit per Gram (cfu/g) = Colony Forming Unit per Gram, LOD = Limit of Detection, (µg/g) = Microgram per Gram (ppm) = Parts per Million, (ppm) = (µg/g), (aw) = aw (area ratio) = Area Ratio, (mg/Kg) = Milligram per Kilogram, \*Measurement of Uncertainty = +/- 10%

This report shall not be reproduced, without written approval, from ACS Laboratory. The results of this report relate only to the material or product analyzed. Test results are confidential unless explicitly waived otherwise. Accredited by a third-party accrediting body as a competent testing laboratory pursuant to ISO/IEC 17025 of the International Organization for Standardization.