



DEA No. RA0571996
FL License # CMTL-0003
CLIA No. 10D1094068

Certificate of Analysis

Compliance Test

WHITE LABEL LEAF
6205 Johns Road
STE 9
Tampa, FL 33634

Batch # WLLC0917
Batch Date: 2022-09-19
Extracted From: HEMP

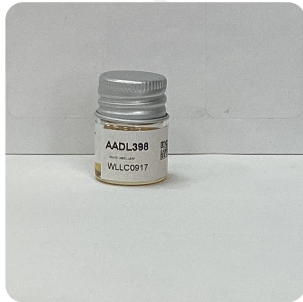
Test Reg State: Florida

Order # WHI220919-020001
Order Date: 2022-09-19
Sample # AADL398

Sampling Date: 2022-09-20
Lab Batch Date: 2022-09-20
Completion Date: 2022-09-22

Initial Gross Weight: 11.162 g
Net Weight: 3.662 g

Number of Units: 1
Net Weight per Unit: 3662.000 mg



Potency
Tested

Product Image

Potency 21 (LCUV)

Specimen Weight: 56.710 mg

Tested
SOP13.030 (LCUV)

Analyte	Dilution (1:n)	LOD (%)	LOQ (%)	Result (mg/g)	(%)
Delta-8 THC	1000.000	2.60E-5	0.0015	698.7000	69.8700
CBNA	10.000	9.50E-5	0.0015	3.8680	0.3868
Delta-8 THCV	10.000	4.00E-5	0.0015	3.5440	0.3544
CBN	10.000	1.40E-5	0.0015	2.2500	0.2250
CBD	10.000	5.40E-5	0.0015	1.1790	0.1179
CBT	10.000	2.00E-4	0.0015	0.5660	0.0566
CBC	10.000	1.80E-5	0.0015		<LOQ
CBCA	10.000	1.07E-4	0.0015		<LOQ
CBDA	10.000	1.00E-5	0.0015		<LOQ
CBDV	10.000	6.50E-5	0.0015		<LOQ
CBDVA	10.000	1.40E-5	0.0015		<LOQ
CBG	10.000	2.48E-4	0.0015		<LOQ
CBGA	10.000	8.00E-5	0.0015		<LOQ
CBL	10.000	3.50E-5	0.0015		<LOQ
Delta-8 THC-O Acetate	10.000	2.70E-5	0.0003		<LOQ
Delta-9 THC	10.000	1.30E-5	0.0015		<LOQ
Delta-9 THC-O Acetate	10.000	7.70E-5	0.0003		<LOQ
Exo-THC	10.000	2.30E-4	0.0015		<LOQ
THCA	10.000	3.20E-5	0.0015		<LOQ
THCV	10.000	7.00E-6	0.0015		<LOQ
THCVA	10.000	4.70E-5	0.0015		<LOQ

Potency Summary

Total Active THC None Detected	Total Active CBD 0.118% 4.320mg
Total CBG None Detected	Total CBN 0.564% 20.650mg
Other Cannabinoids 70.281% 2,573.690mg	Total Cannabinoids 70.963% 2,598.670mg

Xueli Gao
Lab Toxicologist
Ph.D., DABT

Aixia Sun
Lab Director/Principal Scientist
D.H.Sc., M.Sc., B.Sc., MT (AAB)



Definitions and Abbreviations used in this report: Total Active CBD = CBD + (CBD-A * 0.877), *Total CBDV = CBDV + (CBDVA * 0.87), Total Active THC = THCA-A * 0.877 + Delta 9 THC, Total THCV = THCV + (THCVA * 0.87), CBG Total = (CBGA * 0.877) + CBG, CBN Total = (CBNA * 0.877) + CBN, Total CBC = CBC + (CBCA * 0.877), Total THC-O-Acetate = Delta 8 THC-O-Acetate + Delta 9 THC-O-Acetate, Other Cannabinoids Total = Total Cannabinoids - All the listed cannabinoids on the summary section, Total Detected Cannabinoids = Delta8a10a-THC + Delta8-THC + Total CBN + CBT + Delta8-THCV + Total CBG + Total CBD + Total THCV + CBL + Total THC + Total CBC + Total CBDV + Delta10-THC + Total THC-O-Acetate, Analyte Details above show the Dry Weight Concentrations unless specified as 12% moisture concentration. (mg/ml) = Milligrams per Milliliter, LOQ = Limit of Quantitation, LOD = Limit of Detection, Dilution = Dilution Factor (ppb) = Parts per Billion, (%) = Percent, (cfu/g) = Colony Forming Unit per Gram (cfu/g) = Colony Forming Unit per Gram, LOD = Limit of Detection, (µg/g) = Microgram per Gram (ppm) = Parts per Million, (ppm) = (µg/g), (aw) = aw (area ratio) = Area Ratio, (mg/Kg) = Milligram per Kilogram, *Measurement of Uncertainty = +/- 10%

This report shall not be reproduced, without written approval, from ACS Laboratory. The results of this report relate only to the material or product analyzed. Test results are confidential unless explicitly waived otherwise. Accredited by a third-party accrediting body as a competent testing laboratory pursuant to ISO/IEC 17025 of the International Organization for Standardization.