



DEA No. RA0571996
FL License # CMTL-0003
CLIA No. 10D1094068

Certificate of Analysis

Compliance Test

WHITE LABEL LEAF
6205 Johns Road
STE 9
Tampa, FL 33634

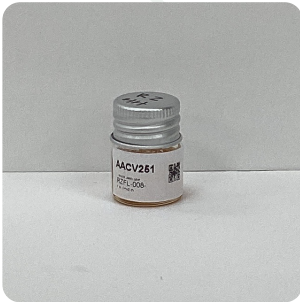
Batch # RZFL-008-HH358
Batch Date: 2022-05-16
Extracted From: HEMP

Test Reg State: Florida

Order # WHI220516-190001
Order Date: 2022-05-16
Sample # AACV251

Sampling Date: 2022-05-17
Lab Batch Date: 2022-05-17
Completion Date: 2022-05-23

Initial Gross Weight: 10.517 g



Product Image

Potency Tested

HHC Tested

Potency 21 (LCUV)

Specimen Weight: 48.360 mg

Tested (LCUV)

Analyte	Dilution (1:n)	LOD (%)	LOQ (%)	Result (mg/g)	(%)
Delta-8 THC	1000.000	0.000026	0.0015	491.4000	49.1400
CBDA	10.000	0.000001	0.0015	11.6500	1.1650
Delta-8 THCV	10.000	0.000004	0.0015	10.5200	1.0520
CBNA	10.000	0.000095	0.0015	5.4000	0.5400
CBT	10.000	0.0002	0.0015	2.6500	0.2650
CBN	10.000	0.000014	0.0015	2.3360	0.2336
Delta-8 THC-O Acetate	10.000	0.000027	0.0003	1.4860	0.1486
CBD	10.000	0.000054	0.0015	0.4280	0.0428
THCVA	10.000	0.000047	0.0015		<LOQ
CBC	100.000	0.000018	0.0015		<LOQ
THCV	10.000	0.000007	0.0015		<LOQ
THCA	10.000	0.000032	0.0015		<LOQ
Exo-THC	10.000	0.00023	0.0015		<LOQ
Delta-9 THC-O Acetate	10.000	0.000077	0.0003		<LOQ
CBCA	10.000	0.000107	0.0015		<LOQ
CBL	10.000	0.000035	0.0015		<LOQ
CBGA	10.000	0.00008	0.0015		<LOQ
CBG	10.000	0.000248	0.0015		<LOQ
CBDVA	10.000	0.000014	0.0015		<LOQ
CBDV	10.000	0.000065	0.0015		<LOQ
Delta-9 THC	10.000	0.000013	0.0015		<LOQ

Potency Summary

Total HHC 21.17170%	Total THC None Detected
Total CBD 1.064%	Total CBG None Detected
Total CBN 0.707%	Other Cannabinoids 50.606%
Total Cannabinoids 73.549%	

Xueli Gao
Ph.D., DABT
Lab Toxicologist

Aixia Sun
D.H.Sc., M.Sc., B.Sc., MT (AAB)
Lab Director/Principal Scientist



Definitions and Abbreviations used in this report: *Total CBD = CBD + (CBD-A * 0.877), *Total CBDV = CBDV + (CBDVA * 0.87), *Total THC = THCA-A * 0.877 + Delta 9 THC, *Total THCV = THCV + (THCVA * 0.87), *CBG Total = (CBGA * 0.877) + CBG, *CBN Total = (CBNA * 0.877) + CBN, *Total CBC = CBC + (CBCA * 0.877), *Total THC-O-Acetate = Delta 8 THC-O-Acetate + Delta 9 THC-O-Acetate, *Other Cannabinoids Total = Total Cannabinoids - All the listed cannabinoids on the summary section, *Total Detected Cannabinoids = Delta8a10a-THC + Delta8-THC + Total CBN + CBT + Delta8-THCV + Total CBG + Total CBD + Total THCV + CBL + Total THC + Total CBC + Total CBDV + Delta10-THC + Total THC-O-Acetate, + HHC *Analyte Details above show the Dry Weight Concentrations unless specified as 12% moisture concentration. (mg/ml) = Milligrams per Milliliter, LOQ = Limit of Quantitation, LOD = Limit of Detection, Dilution = Dilution Factor (ppb) = Parts per Billion, (%) = Percent, (cfu/g) = Colony Forming Unit per Gram (cfu/g) = Colony Forming Unit per Gram, , LOD = Limit of Detection, (µg/g) = Microgram per Gram (ppm) = Parts per Million, (ppm) = (µg/g), (aw) = aw (area ratio) = Area Ratio, (mg/Kg) = Milligram per Kilogram, *Measurement of Uncertainty = +/- 10%

This report shall not be reproduced, without written approval, from ACS Laboratory. The results of this report relate only to the material or product analyzed. Test results are confidential unless explicitly waived otherwise. Accredited by a third-party accrediting body as a competent testing laboratory pursuant to ISO/IEC 17025 of the International Organization for Standardization.



DEA No. RA0571996
FL License # CMTL-0003
CLIA No. 10D1094068

Certificate of Analysis

Compliance Test

WHITE LABEL LEAF
6205 Johns Road
STE 9
Tampa, FL 33634

Batch # RZFL-008-HH358
Batch Date: 2022-05-16
Extracted From: HEMP

Test Reg State: Florida

Order # WHI220516-190001
Order Date: 2022-05-16
Sample # AACV251

Sampling Date: 2022-05-17
Lab Batch Date: 2022-05-17
Completion Date: 2022-05-23

Initial Gross Weight: 10.517 g



HHC

Specimen Weight: 48.360 mg

Tested (LCMS)

Dilution Factor: 10000.000

Analyte	LOQ (%)	Result (mg/g)	(%)	Analyte	LOQ (%)	Result (mg/g)	(%)
(9R)-HHC	7.5E-5	14.2000	1.42	(±)-9β-hydroxy-HHC	7.5E-5	0.5170	0.0517
(9S)-HHC	7.5E-5	197.0000	19.7	Total HHC	7.5E-5	211.7170	21.1717

Xueli Gao
Xueli Gao
Lab Toxicologist
Ph.D., DABT

Aixia Sun
Aixia Sun
Lab Director/Principal Scientist
D.H.Sc., M.Sc., B.Sc., MT (AAB)



Definitions and Abbreviations used in this report: *Total CBD = CBD + (CBD-A * 0.877), *Total CBDV = CBDV + (CBDVA * 0.87), *Total THC = THCA-A * 0.877 + Delta 9 THC, *Total THCV = THCV + (THCVA * 0.87), *CBG Total = (CBGA * 0.877) + CBG, *CBN Total = (CBNA * 0.877) + CBN, *Total CBC = CBC + (CBCA * 0.877), *Total THC-O-Acetate = Delta 8 THC-O-Acetate + Delta 9 THC-O-Acetate, *Other Cannabinoids Total = Total Cannabinoids - All the listed cannabinoids on the summary section, *Total Detected Cannabinoids = Delta6a10a-THC + Delta8-THC + Total CBN + CBT + Delta8-THCV + Total CBG + Total CBD + Total THC + CBL + Total THC + Total CBC + Total CBDV + Delta10-THC + Total THC-O-Acetate, + HHC *Analyte Details above show the Dry Weight Concentrations unless specified as 12% moisture concentration. (mg/ml) = Milligrams per Milliliter, LOQ = Limit of Quantitation, LOD = Limit of Detection, Dilution = Dilution Factor (ppb) = Parts per Billion, (%) = Percent, (cfu/g) = Colony Forming Unit per Gram (cfu/g) = Colony Forming Unit per Gram, LOD = Limit of Detection, (µg/g) = Microgram per Gram (ppm) = Parts per Million, (ppm) = (µg/g), (aw) = aw (area ratio) = Area Ratio, (mg/Kg) = Milligram per Kilogram, *Measurement of Uncertainty = +/- 10%

This report shall not be reproduced, without written approval, from ACS Laboratory. The results of this report relate only to the material or product analyzed. Test results are confidential unless explicitly waived otherwise. Accredited by a third-party accrediting body as a competent testing laboratory pursuant to ISO/IEC 17025 of the International Organization for Standardization.